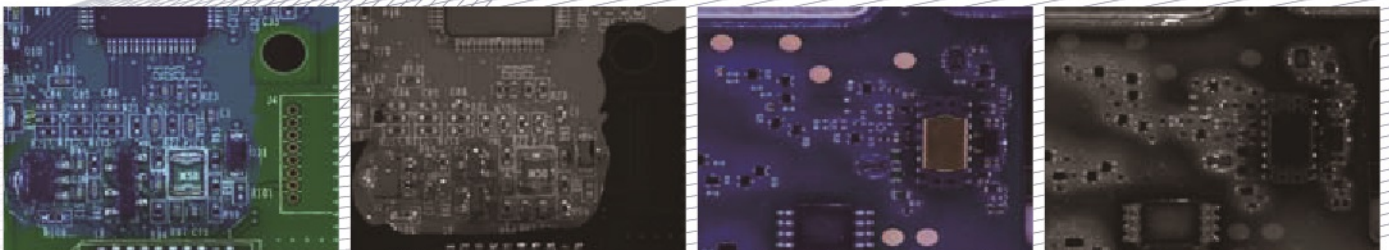


TROI-8800 CI Series

Conformal Coating Inspection System
with Inline Coating Thickness Measure (Option).



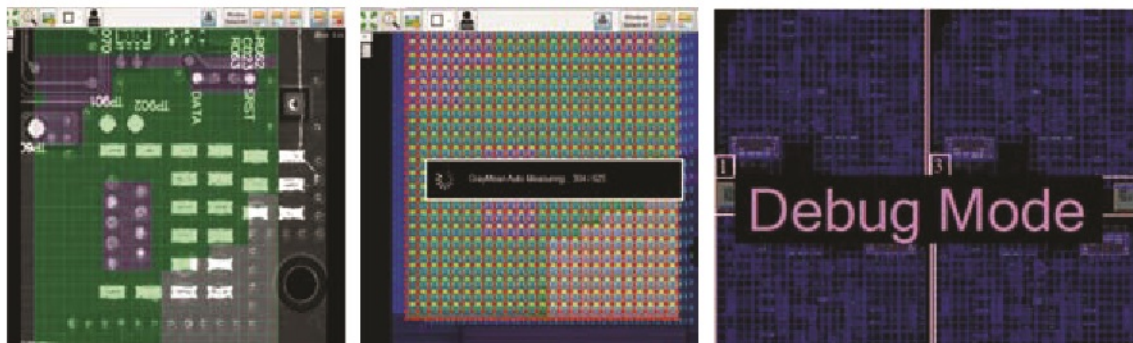
Reliable Conformal Coating Inspection system



Technology and Features

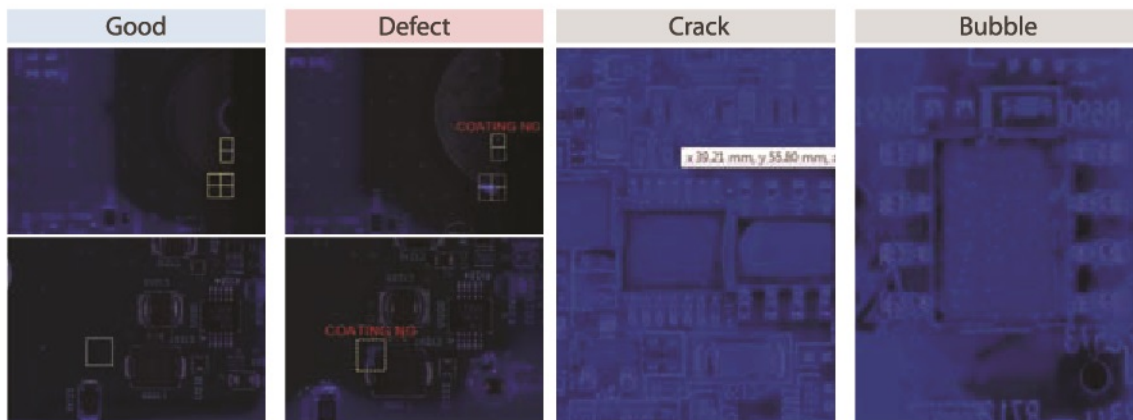
Auto Teaching & Debug

With well coated golden PCB, the ideal tolerance will be recognized and located automatically to be used as standard value for real production



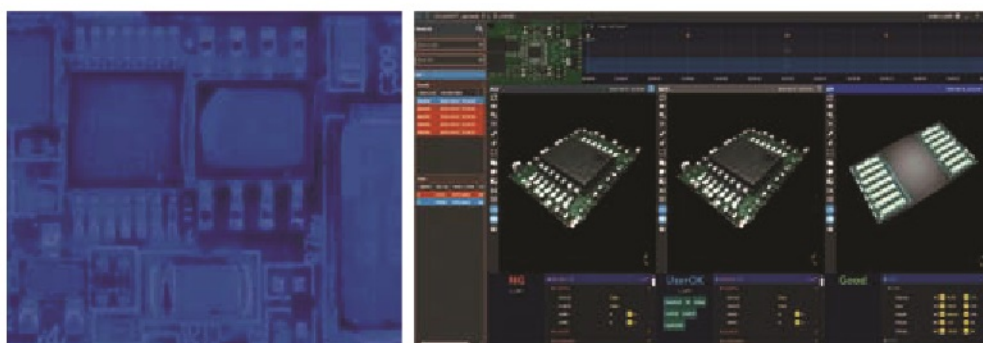
Reliable conformal coating inspection

With easy programming, the machine can inspect quickly and reliably defects such as cracks, coating voids, too-thin / too-thick coatings in just a few minute



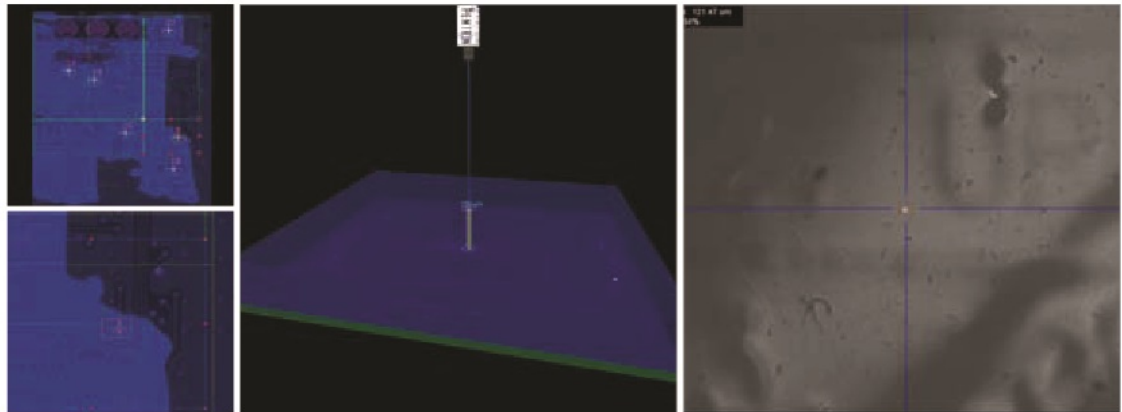
Closed Loop 『SPI + AOI + CI』

Real Time Process & Quality Control Solution
PEMTRON Inspection Result Information Auto Sync

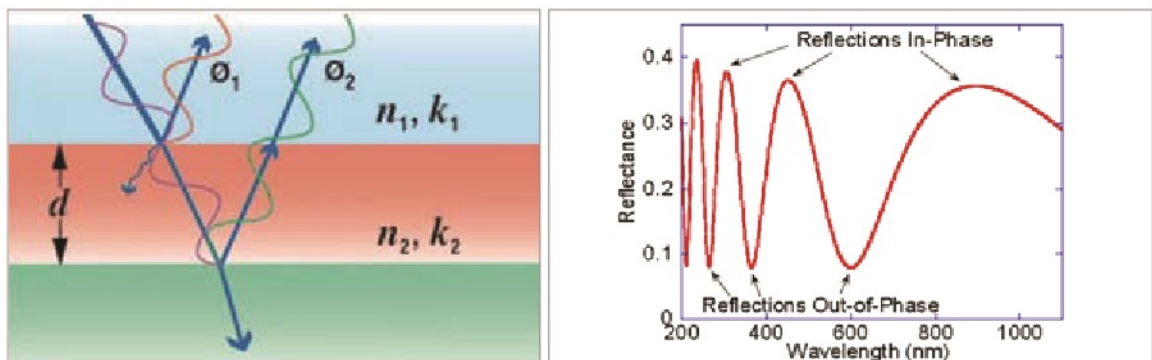


Thickness Inspection

The thickness of the coated surface can be measured by using the refraction of light.

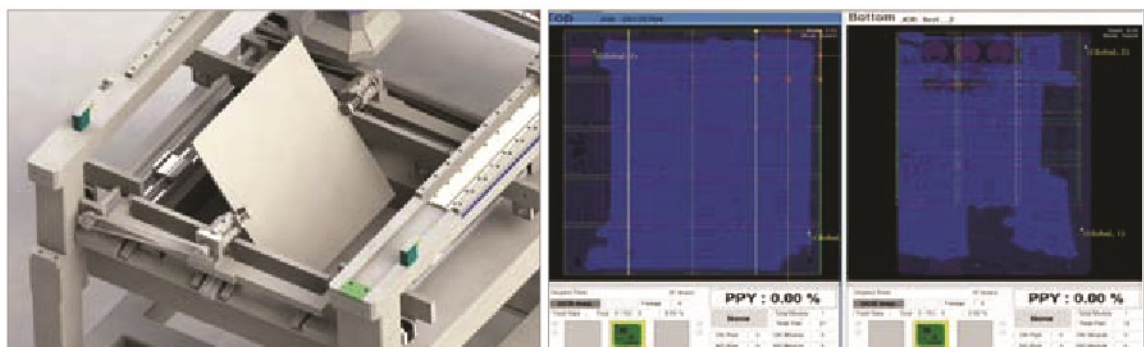


When Light encounters an interface between two materials, it is partially reflected. The wave-like nature of light causes reflections from multiple interfaces to interfere with each other, resulting in oscillations in the wavelength spectrum of the reflected light. From the resulted interference pattern that is created, we determine the distance between the different interfaces



Both sides inspection using reverse module

Easily and fast reversing the PCB automatically, both sides can be inspected.



TROI-8800 CI Series (Conformal Coating Inspection System)

SPECIFICATIONS

Model		TROI-8800CI	TROI-8800CIL
Camera Technology		camera module 4M (UV LEDs)	
Detection Types		coverage, non-coverage, cracks , bubble splashes, position , de-lamination	
Lighting		UV + RGB Lightning	
Resolution		10um	15um
Inspection Speed		16.5 cm ² /sec	38.4 cm ² /sec
FOV (Field of View)		20.5 x 20.5 mm	30.7 x 30.7 mm
Motor Type		Gantry Type	
PCB Specification	Working Area	Min. 50x50mm (2x2inch) Max. 290x330mm (11x13inch)	Min.50x50mm (2x2inch) Max. 470x510mm (18x20inch)
	Coating Thickness Measure (Option)	Min. 50x50mm Max. 220x200mm(9x8inch)	Min.50x50mm Max. 400x380mm(16x15inch)
	PCB Thickness	0.4 – 7.0 mm	
	Top Clearance	60mm	
	Bottom Clearance	60mm	
Installation Requirement	Electrical Requirements	200 – 240 VAC, 50/60 Hz	
	Air Requirement	5 Kgf/cm ²	
	Power Consumption	Standard Type	1.5kW (6.5A Max @ 220V AC)
Control Unit	Control Method	PC Based Control (Windows 7, 64bit)	
	Monitor	24" LED Panel	
Operating	Operating Temperature	20 - 30 °c (68 - 86 °F)	
Machine Dimension	W x D X H	900 x 1070 x 1545mm (35 x 42 x 61 inch)	1100 x 1220 x 1545mm (43 x 48 x 61 inch)
	/ Weight	/ 600kg(1320lb)	/ 700kg(1540lb)
Options		Barcode Reader (1D & 2D) / Touch Panel / UPS(uninterrupted power supply)	

* Specifications subject to change without notice.



PEMTRON CORPORATION

#1406, (Byuksan Digital Valley VI, Gasan-Dong) 219, Gasan digital 1-ro, Geumcheon-gu, Seoul, Korea. 153-704
Tel: +82 2 1833 5220
Fax: +82 2 2627 3770
sales@pemtron.com

PEMTRON TECHNOLOGY, CORP

15111 S. Figueroa St., Gardena, CA 90248
Tel: +1 800 850 8764(TROI)
steve.wong@pemtron.com

PEMTRON Europe GmbH

Kapellenstrasse 11
85622 Feldkirchen bei Munchen
Tel: +49 89 877 688 42
spark@pemtron.com,
mvielsack@pemtron.com

PEMTRON TECHNOLOGY MEXICO, S de RL de CV

Nicolas Bravo #3647, Col. Miguel de la Madrid, Zapopan Jalisco, Mexico CP: 45239
jaime.arreola@pemtron.com
Tel: +52 1 333-157-0636

PEMTRON TECHNOLOGIES ASIA PTE LIMITED

FLAT/RM 1704 17/F SINGGA COMMERCIAL CENTRE 144-151 CONNAUGHT ROAD WEST SAI YING PUN HK
tao@pemtron.com
Tel: +852-3590-5175

PEMTRON TECHNOLOGIES (SHENZHEN) CO.,LTD

RM 409, B Build, GuoRen Building, No.5 Keji Central 3rd Road, Maling Community, Yuehai Street, Nanshan District, Shenzhen, P.R.China
tao@pemtron.com
Tel: +86-755-2165-9772

PEMTRON VIETNAM

Landlord Room03, 12A floor, Viet A building, 09 Duy Tan, Dich Vong, Cau Giay, Hanoi.
Tel: +82-2-2160-5011(Internet Phone)
sy78go@pemtron.com