

EAGLE 3D 8800 TWIN

3D自动光学检测系统
表面/底部双面同时检测

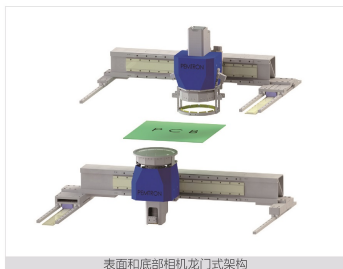
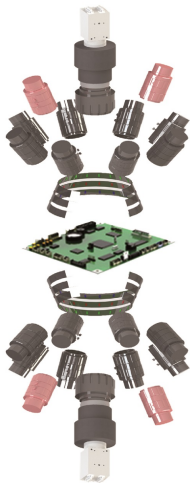


EAGLE 3D AOI 8800 TWIN Series

奔创使用先进的前沿技术，实现在一台设备上同时进行双面同时检测

技术特性

- 表面/底部双面同时检测
- 无时间损失
- 全速全性能
- 可选多种配置组合
 - AOI + AOI / AOI + THT / THT + AOI / THT + THT

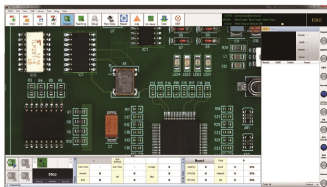


表面和底部相机龙门式架构

- 先进的高速、高精度检测和测量技术
 - 8/10投影+3层RGB
 - 3D+2D同步检测算法
 - 远心镜头保证高精度的检测
- 精益高效的整线控制能力
- 业界最佳的3D成像质量
- 业界中最具创新性和灵活性的解决方案
- 独一无二的3D检测技术
- 4方向侧面相机 (可选)
 - 可检测到连接器内部区域
 - 利用现有算法方便教学

简单明了的用户界面

- 与AOI相同的便捷UI界面方便所有客户轻松使用
- 同时显示双面检测的全部结果
- 表面/底部都可以设置AOI或TH检测



实时监控和质量管控方案

检查数据自动化系统

Printer Net

-与印刷机做闭环系统

Mounter Net

-与贴片机做闭环系统
-BadMark数据共享及自动贴片优化

APC

-用AOI测试数据，自动补偿贴片坐标自动进行优化

PENTRON SPI & AOI Closed Loop Function

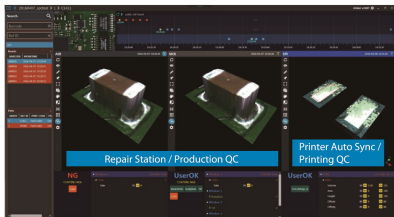
-3点对照系统

SMARTRON

—套软件最多可监控12台设备



SPI & AOI Linkage



制程统计控制



SMT LINE 1

SMT LINE 2

SMT LINE 3

- Pemtron's SPC可收集和分析检验结果，并一目了然的显示给用户。灵活多变的SQL可以给用户提供各种用户需要的报告、结果。
- 服务器选项可集中多台设备的在线监测结果，在SPC中实时反映产线的生产状况。

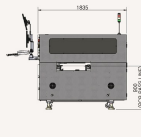
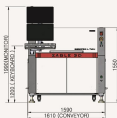
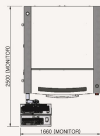
EAGLE 3D 8800 TWIN

SPECIFICATIONS

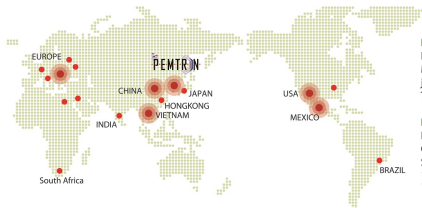
Model	EAGLE 3D - 8800 TWIN			EAGLE 3D - 8800 TWIN PRO
Camera	9MP			12MP
X/Y Pixel Resolution	10um	15um	18um	15um
Inspect Speed	18 cm ² /sec	40.5 cm ² /sec	58.3 cm ² /sec	52.65 cm ² /sec
FOV (Field Of View)	30 x 30mm	45 x 45mm	54 x 54mm	45 x 60mm
Height Range	0 – 5.5mm (option 27mm)			
Height Accuracy	± 3%			
Max. PCB Warpage	± 3mm			
Motor Type	XY Linear Servo Motor			
PCB Specification	Inspection Size	Min. 50 x 50mm (2 x 2 inch)		
	Thickness	Max. 510 x 510mm (20 x 20 inch)		
	Top Clearance	0.4 ~ 7.0mm		
	Bottom Clearance	50mm		
Electrical requirements	220 ~ 240Vac, 1Phase, 50/60Hz			
Power Consumption	5.9kW / 27Amp			
Machine Dimension	W x D x H / Weight	1660x2500x1990mm / 1650kg		

* Specifications subject to change without notice.

DIMENSION



* Specifications subject to change without notice.



PEMTRON TECHNOLOGY MEXICO, S de RL de CV
 Nicolas Bravo #3647, Col. Miguel de la
 Madrid, Zapopan Jalisco, Mexico CP: 45239
 jaime.arreola@pemtron.com
 Tel: +52 1 333-157-0636

PEMTRON TECHNOLOGIES ASIA PTE LIMITED
 FLAT/RM 1704 17/F SINGGA COMMERCIAL
 CENTRE 144-151 CONNAUGHT ROAD WEST
 SAI YING PUN HK
 tao@pemtron.com
 Tel: +852-3590-5175

PEMTRON TECHNOLOGIES (SHENZHEN) CO.,LTD
 RM 409, B Build, GuoRen Building, No.5 Keji
 Central 3rd Road, Maling Community,
 Yuehai Street, Nanshan District, Shenzhen,
 P.R.China
 tao@pemtron.com
 Tel: +86-755-2165-9772

PEMTRON VIETNAM
 Landlord Room03, 12A floor, Viet A building,
 09 Duy Tan, Dich Vong, Cau Gay, Hanoi.
 Tel: +82-2-2160-5011 (Internet Phone)
 sy78go@pemtron.com



PEMTRON CORPORATION

#1406, (Byuksan Digital Valley VI,
 Gasan-Dong) 219, Gasan digital 1-ro,
 Geumcheon-gu, Seoul, Korea. 153-704
 Tel: +82 2 1833 5220
 Fax: +82 2 2627 3770
 sales@pemtron.com

PEMTRON TECHNOLOGY, CORP
 15111 S. Figueroa St., Gardena, CA 90248
 Tel: +1 800 850 8764 (TROI)
 steve.wong@pemtron.com

PEMTRON Europe GmbH
 Kapellenstrasse 11
 85622 Feldkirchen bei Munchen
 Tel: +49 89 877 688 42
 spark@pemtron.com,
 mvielsack@pemtron.com