

EAGLE 3D 8800 TWIN

3D Automated Optical Inspection system

Top/Bottom Double Sided simultaneous inspection

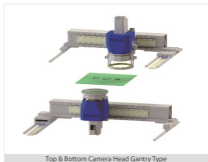
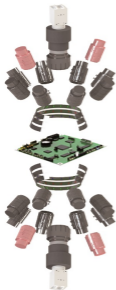


EAGLE 3D AOI 8800 TWIN Series

PEMTRON's advanced leading edge technology doubled in one system

Technology and Features

- Simultaneous Top / Bottom double sided inspection
- No time loss
- Full performance Full speed
- Multi-configurable
 - AOI + AOI / AOI + THT / THT + AOI



Top & Bottom Camera Head Gantry Type

- Advanced High Speed Inspection and Measurement Technology
 - 8 way / 10 way Projection + 3 Stage RGB
 - 3D simultaneous algorithm
 - Telecentric Lens for optimal accuracy
- Lean & Efficient full line control capability
- Proven world best 3D imaging quality
- Absolute world most innovative & flexible solutions
- Unique 3D technology not possible anywhere else
- 4-Way Side Camera (Option)
 - Possible to detect Connector inside area
 - Convenient Teaching by using existing Algorithms.

Simple & Intuitive User Interface

Same UI configuration of AOI allows existing users to use easily
Simultaneously display of all results of both sides.
Both the TOP / BOTTOM can set AOI and TH inspection.

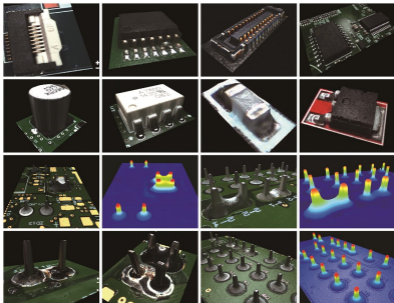


Accurate defect position and Clear image

Best available 3D Images – “This is the best”

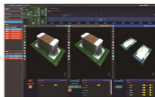
1µm height resolution – always crisp and clear

No limit to component x,y size – Seamless & fast acquisition



Real Time Process and Quality Control Solutions

Inspection Result Information Auto Sync.



- TROI SPI & EAGLE 3D AOI closed loop function - Real time defect confirm

EAGLE 3D 8800 TWIN

SPECIFICATIONS

Model		EAGLE 3D - 8800 TWIN		EAGLE 3D - 8800 TWIN PRO
Camera		SMP		12MP
X/Y Pixel Resolution		10um	15um	15um
Inspect Speed		18 cm ² /sec	40.5 cm ² /sec	58.3 cm ² /sec
FOV (Field Of View)		30 x 30mm	45 x 45mm	54 x 54mm
Height Range		0 - 5.5mm (option 27mm)		
Height Accuracy		± 3%		
Max. PCB Warpage		± 3mm		
Motor Type		XY Linear Servo Motor		
PCB Specification	Inspection Size	Min. 50 x 50mm (2 x 2 inch) Max. 510 x 510mm (20 x 20 inch)		
	Thickness	0.4 - 7.0mm		
	Top Clearance	50mm		
	Bottom Clearance	50mm		
Electrical requirements		220 - 240Vac, 1Phase, 50/60Hz		
Power Consumption		5.9kW / 27Amp		
Machine Dimension	W x D x H / Weight	1660x2500x1990mm / 1650kg		

* Specifications subject to change without notice.

DIMENSION



* Specifications subject to change without notice.



PENTRON TECHNOLOGY MEXICO, S de RL de CV
Nicolas Bravo #3647, Col. Miguel de la
Madrid, Zapopan Jalisco, Mexico CP: 45239
jaime.ameola@pentron.com
Tel: +52 1 333-157-0636

PENTRON TECHNOLOGIES ASIA PTE LIMITED
FLAT/RM 1704 17/F SINGGA COMMERCIAL
CENTRE 144-151 CONNAUGHT ROAD WEST
SAI YING PUN Bldg
tao@pentron.com
Tel: +852-3590-5175

PENTRON TECHNOLOGIES (SHENZHEN) CO.,LTD
RM 409, B Build. GuoRen Building, No.5 Keji
Central 3rd Road, Maling Community,
Yuehai Street, Nanshan District, Shenzhen,
P.R.China
tao@pentron.com
Tel: +86-755-2168-9772

PENTRON VIETNAM
Landlord Room03, 12A floor, Viet A building,
09 Duy Tan, Dich Vong, Cau Gay, Hanoi.
Tel: +82-2-2160-5011 (Internet Phone)
sy78go@pentron.com



PENTRON CORPORATION
#1406, (Byuksan Digital Valley VJ,
Gasan-Dong) 219, Gasan digital 1-ro,
Geumcheon-gu, Seoul, Korea. 153-704
Tel: +82 2 1833 5220
Fax: +82 2 2627 3770
sales@pentron.com

PENTRON TECHNOLOGY CORP
15111 S. Figueroa St., Gardena, CA 90248
Tel: +1 800 850 8764 (TROI)
steve.wong@pentron.com

PENTRON Europe GmbH
Kapellenstrasse 11
Tel: +49 89 877 688 42
spark@pentron.com,
mwi@sack@pentron.com